

## New England Weavers' Seminar



### NEWSletter

#### NEWS 2019

July 11 through 14, 2019

[www.newenglandweavers.org](http://www.newenglandweavers.org)

#### Letter from the President

Spring greetings,

NEWS is nigh upon us and everyone is working diligently to cross all the t's and dot all the i's. We expect this year's NEWS will be as much fun as previous ones. We still have openings in several classes so if you haven't registered yet, there are still some great learning opportunities available. Check the wonderful new website that Susan Targove and Claudia Spaulding worked so hard to put together.

We will have another "Shop-'Til-You-Drop" on Friday evening with dessert and music this year. The music was very well received so we decided to do it again. Thursday's supper will have a Greek theme – we're working on the menu. The Awards show will follow with a brief talk from Robin Spady. Saturday evening, we will elect our officers for 2021 and then hear a talk from Mary Zicafoose.

As always, our Gallery and static Fashions shows will be something to behold, a reflection of the amazing weavers in our area. Our Special Exhibit will focus on the mission and work of the Hartford Artisans Weaving Center. As always, there will be evidence of the unique, playful and artful work of our guilds. The Faculty Show shows insights into the fantastic minds of our instructors.

We look forward to seeing as many of you as possible. Do stop by to see the exhibits, if you can't make a class.

Happy weaving to all.  
Chris House, President

## Social media

NEWS is on Facebook. Make plans with your friends to enjoy NEWS 2019. Use it to talk about what you're weaving or to get input on a problem. Post that you have equipment for sale or are looking for a loom for sale or to borrow for NEWS. Share sources on a weave structure, a technique or an exhibit. Keep the fun going by staying in touch!

## Key Dates for Participants

May 12, 2019	Scholarship Application Deadline
May 15, 2019	End of open cancellation period, with full refund minus 10% cancellation fee
June 11, 2019 (paperwork and digital photos only)	Show Entries Due to intake committees from Guild Reps
June 21, 2019	No refunds for any reason after this date  No new housing or meal registrations accepted after this date
July 5, 2019, 5:00 pm	End of Registration (On-site registration for limited classes on July 11 <sup>th</sup> .)
July 11-14, 2019	Seminar Dates
July 14, 1:00 pm - 1:30 pm	Show pickup

## Fashion and Gallery Shows

Weavers are encouraged to enter items woven since NEWS 2017 into the NEWS 2019 Gallery and Fashion Shows. Paperwork for entering the show is available on the NEWS website.

Weavers are reminded that wearable items belong in the Fashion Show, including structured clothing, scarves, shawls, belts, sashes, jewelry, shoes, purses, handbags, hats, and any other items of apparel. Items of home décor, furniture, table linens, dolls, wall hangings, objets d'art, and utilitarian items like notebooks, tote bags, and electronics cases all belong in the Gallery Show. If you are unsure which category your item falls into or have any questions about the paperwork, please contact your guild's NEWS Rep for guidance.

Each guild sets its own deadline for receipt of paperwork and the woven items from its members. Your guild Rep can inform you of the deadline set so that your guild Rep can forward the paperwork to the NEWS intake teams on time.

Awards will be presented in the evening of Thursday, July 11th. Everyone is, of course, invited to admire the entries on display at the Gallery and Fashion exhibitions.

Kathy Eklund  
Fashion Show Intake Chair

## Gallery and Fashion Show Pick up

Sunday, July 14, 2019

1:00 pm - 1:30 pm

Gallery: Campus Center 103/104

Fashion: Campus Center 205

ONLY guild Reps (or their designated replacements) are allowed to pick up items from the shows. In NO circumstances will items be released to anyone other than the guild representative. Please be sure your guild members are aware of this fact. Guild representatives must have their copy of the Guild Master List when picking up items. Representatives should also bring the packing materials with them. The Fashion and Gallery Show Hanging/Takedown Committees will give you sealed envelopes labeled for each weaver, containing the judging forms and comments for the entries. Please return these to the weavers with their items.

### Sample Guidelines for NEWS 2019

All guild members are encouraged to start to think about and to weave items for the NEWS 2019 Fashion and Gallery shows.

As a reminder, woven samples with draft sheets are strongly encouraged for inclusion in the archives of the NEWS Traveling Library.

Samples should be:

- (1) size of between 3"x3" to 6"x6" or, if the warp is very narrow, selvage to selvage x 6" long
- (2) finished on all sides
- (3) samples should include all handwoven fabrics used in the piece
- (4) If no woven sample is available then a 6" sample of all materials used may be submitted
- (5) the sample(s) must be tagged with the entry number.
- (6) woven samples are not required for split-ply braiding, basketry, or tapestry. Instead the weaver should submit 6" pieces of all materials used.
- (7) a digital image of the piece is **mandatory**.

Be sure to put enough extra warp on the loom to accommodate the sample.

## Volunteer Coordinator Corner

The following information was prepared for the May 4<sup>th</sup> Trustee Meeting. The larger guilds have the larger total hours, the medium less hours and the smaller guilds having the smallest hours required to sit the shows. Note that hours have increased due to adding an additional room for Fashion Scarves.

I've received a few volunteer forms from the website that have stated they are volunteering to set-up a show. These hours from those individuals are not included in the show sitting hour totals. We are very grateful for their willingness to set-up the shows and do their guilds task.

The task now is for our Guild Reps to ask their members when they may be or are willing to be available to sit a show. As times begin to fill, I say with conviction, your members may not be assigned to the venue that was chosen at the Trustee Meeting on May 4<sup>th</sup>. I hope you can all understand.

Now, here goes ...

Large:	WGB, HGCT, NH	22 hours each	66 hours total
Medium:	RI, VT	14 hours each	28 hours total
Small:	Pioneer, Nashoba		
	WWM, Cranberry		
	Springfield	7 hours each	<u>35 hours total</u>
			129 hours

It was determined at the May 4<sup>th</sup> Trustee Meeting closing time for those shows opened on Thursday, July 11 will be 5:30. This will be for Faculty Exhibit, Guild Tables and Library. The closing time for Friday, July 12 is two part: all shows to close at 5:00 with only Fashion and Gallery (and possibly Special Exhibit) to re-open at 7:00 – 9:00 for Shop ‘til You Drop. On Saturday, July 13<sup>th</sup> all shows close at 5:30. On Sunday, July 14<sup>th</sup> the shows will close at 11:30 allowing time to dismantle for pick-up in the afternoon.

All this adds up to 116.5 hours to cover the shows. The Special Exhibit, an additional 26.5 hours, is **not** included in the Total Hours needed. When added together we need to cover **143 hours**.

Guild Assignments to sit shows: T/B/D . All to be discussed on May 4<sup>th</sup>.

Joie McKennerney  
Volunteer Coordinator  
NEWS 2019

*Volunteers are those special people we are grateful to know.  
They go above and beyond.  
We thank them for doing more than their part.  
Volunteers are a real work of heart!*

*Note from Editor:* Not a guild member, not a problem, to volunteer go to the **NEWS Website** [www.newenglandweavers.org](http://www.newenglandweavers.org), from the menu select **2019 Conference**. From the "Welcome to NEWS" menu select **Volunteer**, then select "**Volunteer Form**" at the bottom of the page, **complete** the information and **send** it back to us.





## Newbees

Participants wearing a bee sticker *similar* to the one pictured are first time NEWS attendees. There are more than 90 first timers, including 10 Beginning Weavers. “Veteran” participants, please make an extra effort to enhance their experience. Ask them if they are enjoying their classes, if you see them standing looking confused, ask if they need help getting around. Invite them to join you or your group at lunch! Encourage them to see the various exhibits. Help make NEWS an experience that will boost their weaving! Remember, you were once a Newbee.

## On Campus Housing and Meals

While there is all the information you will need if you are using the On-Campus Housing or taking part in any of the Meal plans for NEWS 2019 there are a few items I would like to call to your attention:

1. When you come to the registration area there is a separate table for getting your room key and/or your meal plan card. Please be sure you stop at our table to ensure a smooth start to your conference experience.
2. It is vital that you return your room and/or meal plan cards or keys at the end of the conference. Otherwise there is a charge for each missing item. In 2017 we had a 100% return rate and I'd like to keep up that success rate in 2019! There will be bags to return the keys at all dorm locations and the dining hall to make returning the keys easy.
3. While we will be staying in the same dorms as we did in 2017 our dining will be in Tyler House. This location is closer to the classrooms and a shuttle bus will be available to facilitate access to the dining hall from other parts of the campus. Please understand, we work very hard to make the conference experience as easy as possible but have to work within the requirements of Smith College as well.

I look forward to seeing you all in July!

Mary Roche  
Housing Chair

## Sample Donations for the Beginning Weaving Class at NEWS

It's not too late to submit sample drafts for Carol Birtwistle's Beginning Weaving class! Making an extra draft sheet with samples for a participant of the NEWS Beginning Weaving class is a small effort that can have a big impact on future weavers. Guilds!, place a collection box at your regular meetings and send the drafts to Jayne as a guild. Drafts can also be saved by you and brought to the NEWS Registration Desk or can be mailed in advance to:

Jayne Flanagan, Past President NEWS 2003  
6 Ottawa Woods Rd  
Scarborough, ME 04074  
jhfpf@maine.rr.com

## Special Interest Groups

**TWIST**, Tablet Weavers' International Studies and Techniques has more than 400 members in more than twenty countries. Initially formed at Convergence 1994 as a study group of [Complex Weavers](#), the group soon struck out on its own. The eagerness of the founding members to communicate resulted in what became the TWIST journal.

TWIST exists to disseminate tablet weaving knowledge, promote tablet weaving and related research, and help tablet weavers improve and expand their skills. We do this through our journal, website, Internet discussion group, sample exchanges, and informal gatherings at fiber arts conferences. To find out more information about TWIST or join, please go to <http://www.tabletweavers.org/>

**Cross Country Weavers**, which began in 1957, is a group of 30 weavers who, each year, weave samples for each other and for two traveling notebooks, which are sent to people and groups when requested. At year-end, one notebook is sent to the Handweaving Museum in Clayton, NY and the other to the University of Mass-Dartmouth Textile Department in New Bedford, MA.

Assignments are decided at NEWS for the following two years, usually alternating a color assignment with a particular weave structure. When there is an open position in the group, a new member is recommended by two current members.

**Complex Weavers** is dedicated to expanding the boundaries of handweaving, to encourage weavers to develop their own creative styles, to inspire through research, documentation, and the sharing of innovative ideas. We challenge our skills and imagination by sharing information and innovations with our fellow weavers – both directly and through our study groups, Seminars, Journal and biennial exhibition, Complexity. <https://www.complex-weavers.org>

## Tuition Grants

NEWS provides scholarship grants to assist with workshop tuition. These grants are ***not*** need-based, but we do ask that you submit an article, for a future issue of the NEWSletter, about your experience and the class.

The article on the following pages fulfills the requirement of a recipient of a 2017 NEWS Tuition Grant. **Editor's note:** Take the time to read the article, it is a touching story.

### A Rug's Journey by Megan Karlen

In 1965, my maternal Grandmother, Mildred Shonka, died of ovarian cancer. Her husband, my Grandfather Pete, remained in their home in New Mexico until his death 10 years later.

My Grandfather didn't visit us in New Jersey often but when he did, his big smiling face belied a handsome and generous spirit. We all received something with turquoise, mine was a tiny ring, and my parents were gifted two small natural-colored geometric-designed rugs.

Mildred, I came to find out, also had a generous spirit because shortly after my grandparents retired to Albuquerque, my Grandmother became closely involved in a group that was working with Navajo women.

Or so I am learning. And the logic may be faulty, and the facts a bit skewed because all of this is coming from my Mother who is now in the throes of dementia brought on by Alzheimers.

Perhaps your family is tight-knit, or perhaps you wish your family connected more but I'm going to bet that many of you will find it very odd that the story of my family has been lost – and lost on purpose. I'm not sure I can analyze why my cousins were never part of our lives, or that my aunts and uncles were never part of our holiday gatherings. I know only that my father's parents died before I knew them and that we had a little bit more time with my mother's parents, but not much. My siblings and I don't know the names of our extended family or what legacies we may be proud of. So, when my father died suddenly in January of 2016, the stark reality of ever learning more passed away with him. As it turns out, my Dad had been covering for my Mom and my Mom did not have typical elderly memory loss, my Mom was already in the mid-to-late stages of dementia.

A draining hourglass can prompt a person into swift action and I long to understand my history. So even though I wasn't sure I was going to get factual information, I began to interview my Mother. I will sit with her, ask a question and then wait to hear what she says.

**1964.** According to my Mom, when her mother was in the hospital getting treatment for her cancer, a large group of Navajo women broke tradition and came to sit in the hallways outside her room. My Mother recounted that she had asked the nurse who they were and that the nurse said these women wanted to show their respect for my Grandmother. According to my Mother, these women sat silently for hours. My mother cried telling me this story.

I remember the rings and the rugs and the necklace my mother received in the 1960s. I can easily flash to photos of my grandfather always donning the turquoise string tie and white shirt. I think about my fascination with Navajo weaving and how I recently crossed paths with a weaver in Vermont who relayed to me what he knew of Navajos and their weaving process. I often wish my Grandparents had lived longer so I could visit them in New Mexico. I long to better understand this spiritual place, to somehow connect with it and them.

Good things happen by word of mouth. On a recommend I was directed to the NEWS website months before registration was to open for 2017. I scrolled through the offerings and there it was – ***Weaving the Navajo Way by Lynda Teller Pete***. This was it. Come hell or high water, I was going to take this class.

My Mother had been an avid needle-pointer so combing through her closets is an archeological dig, carefully peeling through the layers of her art. Where we, as a family, did not receive historical information about family members, we could now see stashes of works in various stages of completion. And, as with a really good dig, this one unearthed a magnificent gift. I recently found 15 perfectly preserved letters from my Grandfather Pete to my Mother during the last year of my Grandmother's life. Type-written, 1 to 2 pages each, and written with everyday details about bridge games, menus and stages of health. I had been given an open window onto the lives of not only my grandparents but my parents and my sister and brother and I, all tiny tots, being mentioned and cooed about by Grandpa Pete.

## Tradition and History

Lynda Teller Pete and her sister Barbara are fifth generation Two Grey Hills weavers. Their history is rich. They are exactly the opposite of what I received growing up. Theirs is a respect and practice of preserving tradition. They are warm and comfortable with each other and us. They seamlessly fold weaving instruction with story telling. They are open to innovation, they allow the historical to bend with the current.

## The Class at NEWS

We were 12 in the class and, if I may speak for the group, each of us was visibly excited. Lynda's sister Barbara had gridded out designs that Lynda had chosen specifically for our group. She said these would most likely ensure that we would all be able to complete our rugs by Sunday. I'm going out on a limb here (again, speaking for the group) but when Lynda sat us in



front of our 2 foot looms and made sure that we all had our 6 inch by 8 inch rug designs and laid out the schedule for the next 4 days saying that she HOPED that we would all be able to finish by Sunday, I was a bit in shock. 54 warp strings to be woven 8 vertical inches and Lynda HOPED that we would finish in 4 days?

Weaving is a craft of tradition and we all learn techniques that have been sent down through the ages but this experience of weaving with Lynda was just short of a perfect combination of the two. The weaving we learned was certainly methodical. We were

finger picking 2, 4, or maybe 10 warp strings at a time. The weft was laid into place without shuttles. You could hear your neighbor murmur "female way" or "male way" and each person's beat of the comb was distinctively different from the other. We were taught to form little tension hills and warned to pack the rug firmly or we would bemoan "the 24 hour inch" on Sunday. Lynda asked us to strum the warp and listen to its pitch and she cheered us on when our packing thwacks started to get louder and more determined. The whole time we were hearing stories of her parents, her grandparents, her sisters, her nephews and nieces. We were weaving on looms made by her husband, using picks made by her nephew, warps spun by her sister, techniques handed down from the Two Grey Hills weavers.



This rich activity was enveloped around us as we literally measured our progress in 1/4 inches.

Sunday arrived. One weaver finished early, most of us were slated to finish mid-morning, and one was far from finishing at all – and in stepped Barbara. Lynda's sister had finished up her lap spindling class and was spending time in our room. Seeing the possibility of the one student's rug not finishing she gently asked if she could help her along. The kindness of this act seems to be inherited as Lynda told us stories of times when each sister was in a pressured situation and the other came to her aide. My take away was that certainly each weaver creates his or her own piece but the sum of the product is the combined efforts and knowledge of a group.



And, in a final act of respect, each rug is cut from the loom and blessed with a prayer. As we presented our rugs together, we circled around the grouping and together touched them all. The poem/prayer/song was spoken. Beauty is restored.

### **My Mother's Rug**

The main design of my rug represents Spider Woman – although I did not realize that when I chose it. Lynda said each weaver personalizes his or her rug so I created a little shape to represent my mother. And this little shape sat on the band that separated the inner pattern from the outer edges. Out of this shape, a pink “spirit” line moves to the right and off the edge of the rug and into another world. It is my humble offering to my Mom to offer comfort and connection if and when she chooses to leave us.



After NEWS I drove directly to visit with my Mother. As I laid the rug into her hands, I saw her fingers rub the weave and I watched as she folded and turned and flattened it with actions that I remembered watching as a little girl. My Mother was always making something: needlepoint, clothes, knits, even ironing linen napkins. I said the names Mildred and Pete. I mentioned that the rug was there to help her.

The NEWS class was aware I was bringing the rug to my Mom and we talked about possible reactions. And as weighty as this disease is, it can also offer some light moments and I emailed the class to let them know what happened: “I told my Mother the rug was there to help her. And in the unfiltered rawness of dementia comments everywhere, she said – and I quote – “And what does it do? Make my feet feel better?”

Funny, right?

And Lynda responded. She said: “Megan, That is exactly what it does. In our Navajo culture we say, “Walk in beauty”. We give our blessings and we have a formal prayer that is related to walking in beauty. The main focus of the prayer is what we all said in class *Hozho nahasdlíí* (beauty is restored).

And then Lynda sent the poem. Here are 2 excerpts. I am astounded at its beauty and purpose.

*In old age wandering on a trail of beauty,  
lively, may I walk.  
In old age wandering on a trail of beauty  
living again, may I walk.  
My words will be beautiful.*

*With beauty before me may I walk.  
With beauty behind me may I walk.  
With beauty below me may I walk.  
With beauty above me may I walk.  
With beauty all around me may I walk.*

## NEWS Executive Board, 2017–2019

### **President**

Christine House  
(603) 357 - 4946  
chouse26@gmail.com

### **First Vice President & Program**

Liz Zocchi  
Lzocchi@comcast.net

### **Co-Second Vice President & Facilities**

Donna Pratt  
(802) 917 - 4760  
donna-pratt  
@outlook.com

Claudia Gibson  
ccgmpr@gmail.com

### **Corresponding Secretary**

Diana Frost  
(603) 868 - 7465  
dianabfrost@gmail.com

### **Treasurer**

Carole Elliott  
(603) 960 - 0262  
carole@kematrans.com

### **Recording Secretary**

Linda Rhynard  
(401) 258 - 7577  
lrhynard@yahoo.com

## NEWS Committees 2017-2019

### **Commercial Exhibits**

Linda Rhynard  
(401) 258 - 7577  
lrhynard@yahoo.com

### **Fashion Show Intake Chair**

Kathy Eklund  
(781) 740 – 4099  
eklundkathy@gmail.com

### **Graphics**

Sue Taube  
sue@taube-violante.com

### **Historian**

Linda Snook  
(508) 446 - 1931  
linda.c.snook@gmail.com

### **Housing & Dining**

Mary Roche  
(860) 918 – 0600  
mary.roche@eversource.com

### **NEWSletter Editor**

Deborah Adamczyk  
(413) 436-5618  
djadamczyk@comcast.net

### **Publicity**

Laura Walton  
(413) 345 - 1129  
Laurawalton25@gmail.com

### **Registration Brochure**

Elaine Palmer  
(413) 835 - 1784  
elainespalmer@comcast.net

### **Scholarship**

Diana Vaughn  
dmdc01@gmail.com

### **Seminar Registrar**

Susan Targove  
(508) 479-3677  
stargove@comcast.net

### **Tours**

Susan Wright  
weaveallnight@yahoo.com

### **Traveling Library**

Ro Spinelli  
(508) 238 – 0185  
reilspin@comcast.net

### **Volunteers**

Joie McKenney  
(860) 408 - 0096  
joiegmc@outlook.com

### **Webmasters**

Susan Targove  
(508) 479-3677  
[stargove@comcast.net](mailto:stargove@comcast.net)

Claudia Spaulding  
(203) 631 – 2202  
cbspaulding@gmail.com



**Advisory**

Mary Roche

(860) 918 - 0600

mary.roche@eversource.com

**Awards Co-Chairs**

Sharman French

(860) 919 – 5988

sfrench1@comcast.net

Elise Cotrone

elisecotrone@yahoo.com

**Guild Responsibilities for NEWS 2019****Faculty Exhibit**

Weavers' Guild of Rhode Island

**Fashion Show Intake & Jurying:**

Cranberry Country Weavers

**Fashion Show Hanging & Take Down:**

Vermont Weavers' Guild

**Gallery Show Intake & Jurying:**

Weavers' Guild of Boston

**Gallery Show Hanging & Takedown:**

Handweavers' Guild of Connecticut

**Guild Shows:**

Nashoba Valley Weavers' Guild

**Information & Daily Registration:**

Weavers of Western Mass &amp;

New Hampshire Weavers' Guild

**Jury Secretaries:**

Pioneer Valley Weavers

Nashoba Valley Weavers' Guild

Cranberry Country Weavers

**Nominating Committee:**

Vermont Weavers' Guild

**Publicity:**

Laura Walton

**Registration Packet & Name Tags:**

Weavers' Guild of Springfield

**Special Exhibit:**

Handweavers' Guild of Connecticut

**Swatches Guild Rotation:***Fall 2019:* Pioneer Valley Weavers*Spring 2020:* Nashoba Valley Weavers*Fall 2020:* Cranberry Country Weavers*Spring 2021:* Connecticut**Transportation of Teachers:**

Pioneer Valley Weavers

*NEWSLetter* Spring/Summer 2019

## NEWS Guild Trustees

### **Cranberry Country Weavers**

Rosemonde Spinelli  
South Easton, MA  
(508) 238-0185  
reilspin@comcast.net

Jan Lyons  
Dandilyons@comcast.net

### **Handweavers' Guild of Connecticut**

Kathleen Kaliscak  
Seymour, CT  
(203) 640 - 3867  
kaliscak@sbcglobal.net

Stephanie Slattery  
Hamden, CT  
(203) 288 - 6289  
sjslattery@gmail.com

### **Nashoba Valley Weavers' Guild**

Andrew Fielding  
droovonsnapchat@gmail.com

Susan Targove  
(508) 479 - 3677  
stargove@comcast.net

### **New Hampshire Weavers' Guild**

Marjie Thompson  
marjie@maine.rr.com

Carole Elliott  
Warren, NH  
(603) 960 - 0262  
carole@kematrans.com

### **Pioneer Valley Weaver's Guild**

Patricia Colson-Montgomery  
(413) 695-7603  
trishcolson@gmail.com

Elizabeth Greene  
(413) 527 – 8102  
eagreene@charter.net

### **Vermont Weavers' Guild**

Susan Rockwell  
(802) 917-4760  
msrockwellvt@gmail.com

Claudia Gibson  
(603) 443 - 0104  
ccgmpr@gmail.com

### **Weavers' Guild of Boston**

Diana Vaughn  
dmdc01@gmail.com

Susan Haggerty  
SusanBH@alum.wellesley.edu

### **Weavers' Guild of Rhode Island**

Ginny Walsh  
(413) 695- 7603  
Mvwalsh@gmail.com

### **Weavers' Guild of Springfield**

Susan Wright  
Northfield, MA  
(413) 687 - 4747  
weaveallnight@yahoo.com

Loris Epps  
Springfield, MA  
weft.epps@verizon.net



## **Weavers' of Western Mass**

Elaine Palmer  
(413) 835 - 1784  
elainespalmer@comcast.net

Patricia Colson-Montgomery  
trishcolson@gmail.com

## **Sample Library**

The Sample Library consists of notebooks of handwoven swatches and drafts. Most of the books contain only one weave structure, and some are further divided by number of harnesses. Some are records of fashion shows, gallery shows and study groups. All are fascinating.

These notebooks are available for checkout by any NEWS member guild, or any individual member of such a guild. You **MUST** be a member in good standing of a member guild in order to borrow the notebooks. Please check with the membership chair of your guild to verify your membership status.

Check out is simple: call Ro Spinelli at 508-238-0185, and leave a message or email her at [reilspin@comcast.net](mailto:reilspin@comcast.net). Please, when emailing, put "NEWS Sample Library" in the subject line. Ro will mail the notebook to you. The borrower pays postage both ways and may keep the notebook for up to 3 months (except that all books must be returned prior to the biennial NEWS seminar).

All members of NEWS guilds are encouraged to submit a sample of their work to the sample library! Just one will do, or submit as many times as you like. You may use the NEWS library draft sheet or any draft sheet you are familiar with. Please include the threading and treadling draft, warp and weft yarns descriptions or samples, sett used, reed used, and the woven sample of at least 4"x4". Please attach the swatch of actual fabric to the draft. These samples are then filed in the appropriate notebooks, so that new examples, new yarns, and new colors appear within each weave structure category.

The Library is in need of examples of more than 4 harnesses, in many of the weave structure category notebooks. *Please think of the Sample Library whenever you weave!* One 4" woven sample with draft sheet and information is a great way to share your work and have it as part of this inspirational library!

Guilds and study groups are also encouraged to make an extra whole notebook for the library of any studies group, friendship weavings projects, or guild projects they may do as a group. The Sample Library exists so that a permanent record of your work will be available to other guilds for study purposes and for inspiration!

To submit a draft and handwoven swatch to this Sample Library, mail it to:

Rosemonde Spinelli  
NEWS Library  
79 Kilsyth Road  
South Easton, MA 02375

All sample notebooks are available to borrow for up to 3 months, EXCEPT the Notebooks of the entries for the NEWS exhibits. These Seminar Exhibition Books are available to view at the NEWS seminar, or by special arrangement with Ro. Rules for borrowing are on the website (Resources/Sample Library). If you would like a Sample Library listing, please email Ro and please put NEWS Sample Library in the subject line.

## Subscription Information

The *NEWSLetter* is published electronically twice yearly. Electronic subscriptions are free and available to all. Weavers who attended NEWS 2017 and who do not have an email account are eligible to receive the *NEWSLetter* by US mail.

For issues regarding *NEWSLetter* distribution (including adding or removing your email from our distribution list), please contact Susan Targove ([stargove@comcast.net](mailto:stargove@comcast.net)).

Submissions are welcome and/or for questions/concerns regarding the content of the *NEWSLetter*, please contact Debbie Adamczyk ([djadamczyk@comcast.net](mailto:djadamczyk@comcast.net)).

## News from Our Guilds

### Cranberry Country Weavers

[www.cranberrycountryweavers.com](http://www.cranberrycountryweavers.com)

We meet at the West Bridgewater Public Library, West Bridgewater MA. Our meetings are on the third Wednesday of month, from September to June, excluding December. The meetings consist of a business meeting and an educational program or hands-on workshop about a technique of handweaving or project. We meet from 10:00am- 2:00, sometimes, 3:00PM. We welcome everyone, from beginners to professionals. For further information, please consult our website.

### Handweavers' Guild of Connecticut

[www.handweaversguildofct.org](http://www.handweaversguildofct.org)

The Handweavers' Guild of Connecticut invites handweavers, spinners and other fiber artists from all levels of experience to exchange ideas and share knowledge, to encourage and educate, to stimulate creativity and to challenge their abilities in fiber art techniques.

The Guild meets five times a year the third Saturday of the month, bimonthly from September through May. All meetings are held at [The Congregational Church of South Glastonbury](#), located at the intersection of Main & High St. in S Glastonbury, CT.

**Maxi Workshops** usually are scheduled two to three times a year, generally one or two days before a state Guild meeting.

**Mini Workshops** are held from 10:00 to 11:45 a.m. For most workshops, the fee is \$10.00. If the guest speaker gives a mini, the fee is \$12.00. Members are advised to register ahead by [email](#). Members and non-members may also register at a meeting.

**Open Workshops** are held in the meeting room from 10 a.m. to 11:45 a.m. at each meeting. Taught by individual guild members, they are free and open to all members and guests.

**Please see our website for additional information.**

## **Nashoba Valley Weavers' Guild**

[www.nvwg.org](http://www.nvwg.org)

We are a small, friendly group of weaving enthusiasts local to Middlesex and Worcester counties and just 12 miles from the New Hampshire border.

We usually meet in the evening on the fourth Tuesday of each month from September until June. We meet at The Fiber Loft, 9 Mass Ave (Rte. 111) in Harvard, MA. Refreshments, shopping, and browsing in the Guild library starts at 7 pm and the meeting starts at 7:30 pm with a brief business meeting followed by the evening's program.

Guests are always welcome! For more information, visit our website.

## **New Hampshire Weavers' Guild**

[www.nhweaversguild.org](http://www.nhweaversguild.org)

The New Hampshire Weavers Guild meets on the third Wednesday of September, October, November, March, April, and May at the Kimball-Jenkins School of Art Estate, 266 North Main Street, Concord, NH 03301

We welcome all weavers, beginner to advanced, to experience the joy of meeting like-minded individuals and expanding our horizons. See our website for program details.

## **Pioneer Valley Weavers**

[www.pioneervalleyweavers.org](http://www.pioneervalleyweavers.org)

### **Our Mission Statement:**

To educate, inspire and foster excellence in the weaving community.

To stimulate a broader appreciation of the fiber arts, by the public.

To maintain an atmosphere of friendship and acceptance.

Pioneer Valley Weavers' meets the second Tuesday from September through June, at Webs in Northampton, MA. *Pioneer Valley extends sincere Thanks! to **Webs** for their continued support of our guild, its members and programs.* Monthly meetings include social time and snacks, Show and Share and a formal program. The exceptions would be December and June, which are more social than formal. For more information contact [guild.chair@comcast.net](mailto:guild.chair@comcast.net).

We are near the end of our guild year and look forward to the Upcoming 2019-2020 Program. Our remaining program for this year is:

May 14<sup>th</sup>

June 11<sup>th</sup>

Lisa Hill: "Off the Grid" Combining weave structures

Potluck

Visitors are welcome. Membership dues are \$25./year. Please join us!

## **Vermont Weaver's Guild**

<http://vtweaversguild.org>

The Vermont Weavers Guild is a non-profit educational association. Its purpose is to increase technical proficiency and artistic experience by providing a well-rounded educational program, to promote and maintain high standards of weaving, as well as related fiber arts, to share our knowledge and ideas and to bring together hand-weavers.

Meetings are held monthly on Saturdays (usually 2nd Saturday) in September, October, November, February, March, April and May at the Kimball House, Randolph, Vermont. See our website for program details.

Workshops are open to members of other guilds, if space is available.

## **Weavers' Guild of Boston**

[www.weaversguildofboston.org](http://www.weaversguildofboston.org)

The Weavers' Guild of Boston continues to promote hand weaving, among seasoned and novice weavers, as it has for over 90 years. All are welcome to attend the daytime gathering starting at 10 am on the second Wednesday of September through November and February through May at the Westborough Congregational Church. Morning workshops are offered throughout the year and an extensive library is available. Afternoon speakers follow a short business meeting. For more information on the guild including its rating program, please visit our website.

## **Weavers' Guild of Rhode Island**

[www.wgri.org](http://www.wgri.org)

The Weavers Guild of Rhode Island was founded in 1947.

Our goal is to promote the understanding and practice of the art and craft of weaving both for its members and the public.

We usually meet on the first Saturday of the month, September through June unless a holiday weekend occurs, at the [North Kingstown Free Library](#). Doors open at 9am; the meeting begins at **9:30 am**. *Everyone* is welcome.

## **The Weavers' Guild of Springfield**

Website: [www.weaversspring.com](http://www.weaversspring.com)      E-mail: [weaversspring@gmail.com](mailto:weaversspring@gmail.com)

The guild meets either the first or second Saturday of each month (depending on the month). Meetings are held at Longmeadow Community House, 735 Longmeadow Street, Longmeadow, MA 01106 and start at 10:15 am for the morning program, lunch and our business meetings are from 12:00 to 12:30 and the afternoon program runs from 12:30 to usually 3:00. Show and Tell is done following lunch and before the afternoon program. Dues are \$25 per year. Our final meeting for this guild year is May 11th - Pot Luck Lunch and Year End Wrap Up

## **Weavers of Western Mass**

[www.weaversofwesternmass.org](http://www.weaversofwesternmass.org)

Weavers of Western Mass meet on the 4th\* Wednesday of the month, September through May with the exception of December. The guild meetings begin with social time at 12:30 pm\*\*, business meeting from 1 - 1:30 pm, and the monthly program from 1:45 - 3:15 pm. The guild meetings are held at Hill Institute, 83 Pine Street, Florence, MA, off street parking is available. Visitors are welcome to come to one meeting prior to joining the guild. Membership dues are \$25 per year.

\* Some dates change due to national and Northampton Public School holidays.

\*\*Please don't enter the building prior to 12:30pm

Along with providing monthly programming, the guild maintains a library and offers workshops. The library is open to guild members during guild meetings and arrangements can be made for periodic access throughout the programming year. See our website for upcoming programs.

*WWM extends our sincere thanks to Hill Institute for their generous donation of meeting space and storage space for our library.*

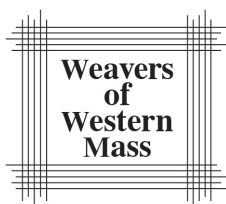
## **Woven Sample**

Woven by our member Guilds on a rotating schedule, each NEWSLetter contains a woven sample, consisting of a scanned copy of the woven fabric along with the draft. Below, please see the pages that follow with a wonderful sample submitted by the **Weavers of Western Massachusetts**.

**WWM's** sample is a cheerful multi-colored, 8 Shaft Doubleweave. Weaving details and drafts are provided.

The original fabric will be available in the NEWS Library, along with a large collection of prior fabric samples and their drafts. (See the paragraph on the **Sample Library** for more information.)





**WWM Multi-Color Doubleweave Study Group Scarf Sample**

**By Anita Thompson**

8 Shaft, Four Color Doubleweave Twill

**Project:** 12 samples and 1 scarf, samples shared between fellow study group members and one for the guild study group sample binder

**Warp:** 8/2 Tencel, Ecru and Black, WEBS

**Weft:** 8/2 Tencel, Mineral Green and Azure, WEBS

**Loom:** Toika Computer Assist 16S under moderate tension

**Sett:** 36 epi & ppi for sample

**Reed:** 18 dent reed, sley 2 per dent

**Weaving Notes:**

2 Shuttle weave

328 Ends, includes 2 floating selvages

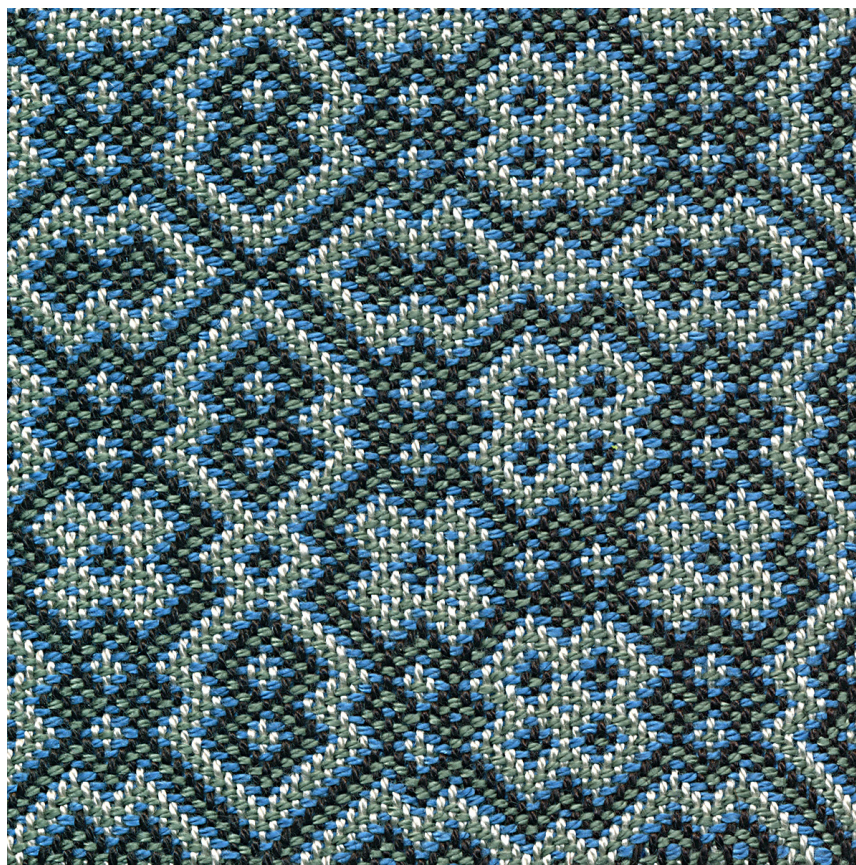
Handwashed with fabric softener and air dried

On-loom width, 8 3/8"; after wet finish and air dry, 8" (2 samples across)

Take-up and shrinkage: 14%

Scarf re-sleyed at 34 epi & ppi to give the scarf more drape

Scarf weft, Taupe and Straw, started with 4 picks Taupe, then 4x4 hemstitch





## Design Line



## Multi-Color Doubleweave Study Group Scarf Sample By Anita Thompson

8 Shaft, Four Color Doubleweave Twill

### WeavePoint Weaving Software Design Steps:

1. Design Line;
2. Utilities>Tromp as Writ;
3. Transform>Insert parallel, threading, insert 1, step 4, OK;
4. Fill>Colors>choose 2, Fill AB, Fill Warp;
5. Transform>Insert Parallel, Treading, Step 8, Insert 1, OK;
6. Fill Colors>choose2, Fill AB, Fill Weft.

